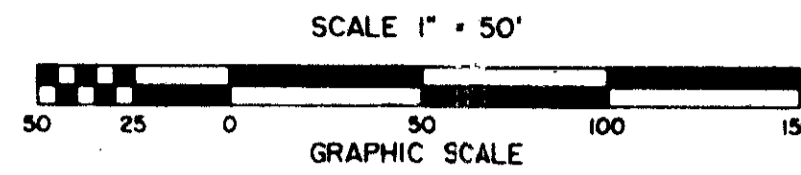


PART OF A P.U.D.  
**SOLIMAR AT BOCA DEL MAR - PHASE III**  
 A PLAT OF A PORTION OF SECTION 21, TWP. 47 S., RGE. 42 E.  
 AND ALSO BEING A REPLAT OF A PORTION OF TRACT 1, OF BOCA DEL MAR NO. 5, AS RECORDED  
 IN PLAT BOOK 30, PAGES 127 & 128 OF THE PUBLIC RECORDS OF PALM BEACH COUNTY, FLORIDA  
 JOHN A. GRANT, JR., INC. CONSULTING ENGINEERS & LAND SURVEYORS BOCA RATON, FLORIDA

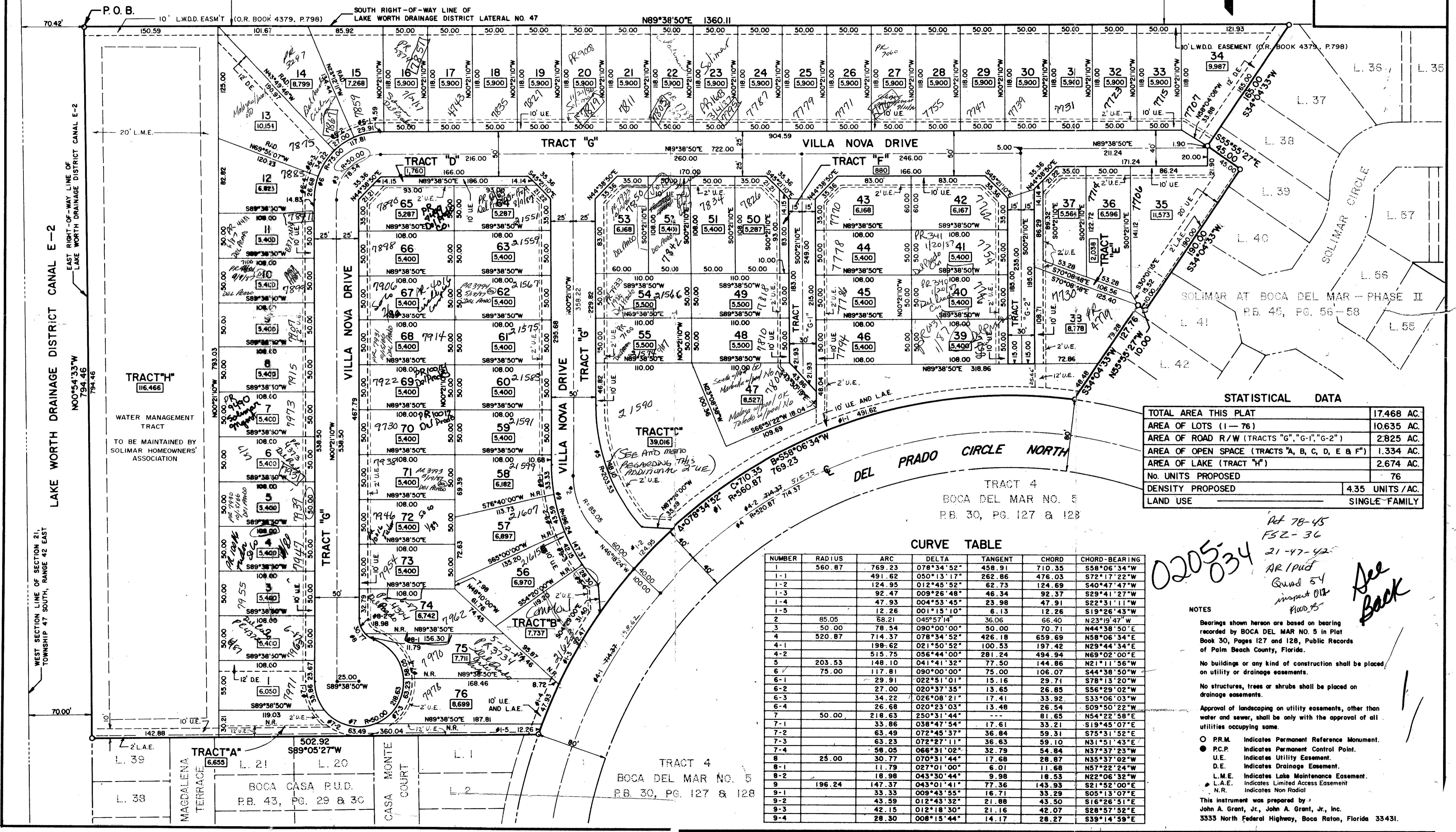
JUNE 1984  
 SHEET 2 OF 2



P.B. 50  
 P. 123 & 124

ADD ADD'L UTILITY EASEMENTS RECORDED 5/8/85 - O.R. 4539, P.204-205

WEST 1/4 CORNER OF SECTION 21, TOWNSHIP 47 SOUTH, RANGE 42 EAST  
 NORTH LINE OF SOUTH 1/2 OF SECTION 21, TOWNSHIP 47 SOUTH, RANGE 42 EAST  
 LAKE WORTH DRAINAGE DISTRICT LATERAL NO. 47



**STATISTICAL DATA**

TOTAL AREA THIS PLAT	17,468 AC.
AREA OF LOTS (1-76)	10,635 AC.
AREA OF ROAD R/W (TRACTS "G", "G-1", "G-2")	2,825 AC.
AREA OF OPEN SPACE (TRACTS "A", "B", "C", "D", "E" & "F")	1,334 AC.
AREA OF LAKE (TRACT "H")	2,674 AC.
NO. UNITS PROPOSED	76
DENSITY PROPOSED	4.35 UNITS/AC.
LAND USE	SINGLE-FAMILY

**CURVE TABLE**

NUMBER	RADIUS	ARC	DELTA	TANGENT	CHORD	CHORD-BEARING
1	560.87	769.23	078°34'52"	458.91	710.35	S58°06'34"W
1-1		491.62	050°13'17"	262.86	476.03	S72°17'22"W
1-2		124.95	012°45'52"	62.73	124.69	S40°47'47"W
1-3		92.47	009°26'48"	46.34	92.37	S29°41'27"W
1-4		47.93	004°53'45"	23.98	47.91	S22°31'11"W
1-5		12.26	001°15'10"	6.13	12.26	S19°26'43"W
2	85.05	68.21	045°57'14"	36.06	66.40	N23°19'47"W
3	50.00	78.54	090°00'00"	50.00	70.71	N44°38'50"E
4	520.87	714.37	078°34'52"	426.18	659.69	N58°06'34"E
4-1		198.62	021°50'52"	100.53	197.42	N29°44'34"E
4-2		515.75	056°44'00"	281.24	494.94	N69°02'00"E
5	203.53	148.10	041°41'32"	77.50	144.86	N21°11'56"W
6	75.00	117.81	090°00'00"	75.00	106.07	S44°38'50"W
6-1		29.91	022°51'01"	15.16	29.71	S78°13'20"W
6-2		27.00	020°37'35"	13.65	26.85	S56°29'02"W
6-3		34.22	026°08'21"	17.41	33.92	S33°06'03"W
6-4		26.68	020°23'03"	13.48	26.54	S09°50'22"W
7	50.00	218.63	250°31'44"	---	81.65	N54°22'58"E
7-1		33.86	038°47'54"	17.61	33.21	S19°45'07"E
7-2		63.49	072°45'37"	36.84	59.31	S75°31'52"E
7-3		63.23	072°27'11"	36.63	59.10	N31°51'43"E
7-4		58.05	066°31'02"	32.79	54.84	N37°37'02"W
8	25.00	30.77	070°31'44"	17.68	28.87	N35°37'02"W
8-1		11.79	027°01'00"	6.01	11.68	N57°22'24"W
8-2		18.98	043°30'44"	9.98	18.53	N22°06'32"W
9	196.24	147.37	043°01'41"	77.36	143.93	S21°52'00"E
9-1		33.33	009°43'55"	16.71	33.29	S05°13'07"E
9-2		43.59	012°43'32"	21.88	43.50	S16°26'51"E
9-3		42.15	012°18'30"	21.16	42.07	S28°57'52"E
9-4		28.30	008°15'44"	14.17	28.27	S39°14'59"E

*0205-034*  
*Ref 78-45*  
*F52-36*  
*21-47-42*  
*AR 1PUD*  
*Quads 54*  
*inspect 01/2*  
*1/10/85*  
*See Back*

**NOTES**

Bearings shown hereon are based on bearing recorded by BOCA DEL MAR NO. 5 in Plat Book 30, Pages 127 and 128, Public Records of Palm Beach County, Florida.

No buildings or any kind of construction shall be placed on utility or drainage easements.

No structures, trees or shrubs shall be placed on drainage easements.

Approval of landscaping on utility easements, other than water and sewer, shall be only with the approval of all utilities occupying same.

P.P.M. Indicates Permanent Reference Monument.  
 P.C.P. Indicates Permanent Control Point.  
 U.E. Indicates Utility Easement.  
 D.E. Indicates Drainage Easement.  
 L.M.E. Indicates Lake Maintenance Easement.  
 L.A.E. Indicates Limited Access Easement.  
 N.R. Indicates Non Radial.

This instrument was prepared by:  
 John A. Grant, Jr., John A. Grant, Jr., Inc.  
 3333 North Federal Highway, Boca Raton, Florida 33431.

LAKE WORTH DRAINAGE DISTRICT CANAL E-2  
 EAST RIGHT-OF-WAY LINE OF LAKE WORTH DRAINAGE DISTRICT CANAL E-2  
 WEST SECTION LINE OF SECTION 21, TOWNSHIP 47 SOUTH, RANGE 42 EAST  
 WEST 1/4 CORNER OF SECTION 21, TOWNSHIP 47 SOUTH, RANGE 42 EAST  
 TRACT "H" 116,466  
 WATER MANAGEMENT TRACT  
 TO BE MAINTAINED BY SOLIMAR HOMEOWNERS' ASSOCIATION

LAKE WORTH DRAINAGE DISTRICT CANAL E-2  
 WEST SECTION LINE OF SECTION 21, TOWNSHIP 47 SOUTH, RANGE 42 EAST  
 TRACT "A" 6,655  
 BOCA CASA P.U.D.  
 P.B. 43, PG. 29 & 30  
 MAGDALENA TERRACE  
 CASA MONTE COURT

TRACT 4  
 BOCA DEL MAR NO. 5  
 P.B. 30, PG. 127 & 128